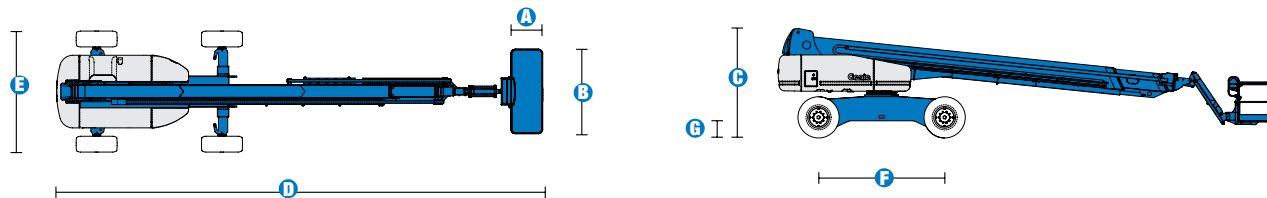


S™-125

Specifications



MODEL	S™-125
MEASUREMENTS	
	Metric
Working height maximum*	40.15 m
Platform height maximum	38.15 m
Horizontal reach maximum	24.38 m
Below ground reach	3.27 m
A Platform length	0.91 m
B Platform width	2.44 m
C Height - stowed	3.07 m
D Length - stowed	14.25 m
Length - transport (jib tucked under)	12.17 m
E Width - axles retracted	2.49 m
Width - axles extended	3.35 m
F Wheelbase	3.66 m
G Ground clearance - centre	0.44 m

PRODUCTIVITY	
Lift capacity	227 kg
Platform rotation	160°
Vertical jib rotation	135°
Turntable rotation	360° continuous
Turntable tailswing - axle retracted	1.68 m
Turntable tailswing - axle extended	1.24 m
Drive speed - stowed	4.8 km/h
Drive speed - raised/extended below 80 ft	1.1 km/h
Drive speed - raised/extended above 80 ft	0.55 km/h
Gradeability - stowed**	40%
Turning radius - axle retracted: inside	4.01 m
outside	6.75 m
Turning radius - axle extended: inside	2.59 m
outside	5.74 m
Controls	12V DC proportional
Tyres - RT lug - Foam filled	445/65 D22.5

POWER	
Power source	Deutz TD 2011 L04i 4-cylinder turbo diesel 55 kW (74 hp)
Auxiliary power unit	12V DC
Hydraulic tank capacity	208 L
Fuel tank capacity	151 L

WEIGHT***	
	20,739 kg

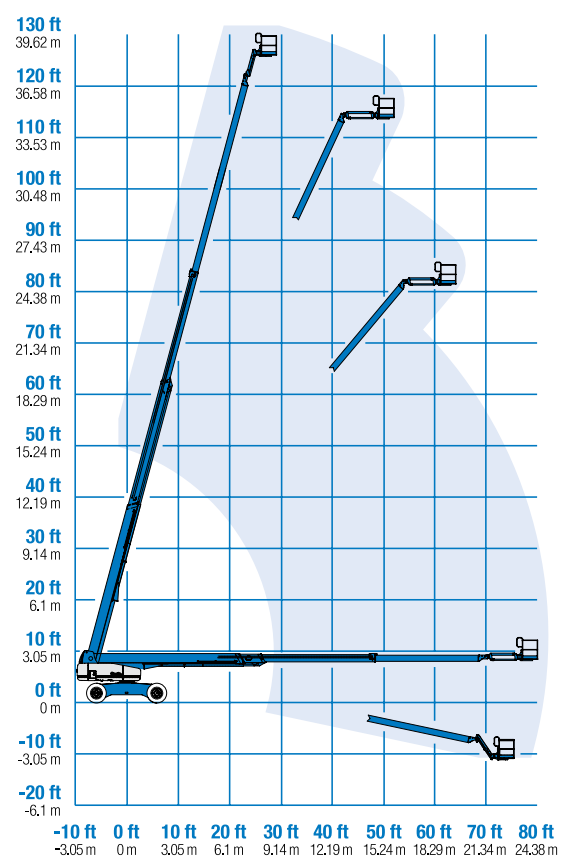
STANDARDS COMPLIANCE ANSI A92.5, CSA B354.4, CE Compliance, AS 1418.10

* The metric equivalent of working height adds 2 m to platform height.

** Gradeability applies to driving on slopes. See operator's manual for details regarding slope ratings.

*** Weight will vary depending on options and/or country standards.

RANGE OF MOTION S™-125



S™-125

Features

STANDARD FEATURES

MEASUREMENTS

S™-125

- 40.15 m working height
- 24.38 m horizontal reach
- 227 kg lift capacity

PRODUCTIVITY

- 2.44 m steel platform
- 1.52 m jib boom with 135° working range
- 4WD
- 4WS
- Extendable axles
- Rough terrain foam-filled tyres
- Self-leveling platform
- Hydraulic platform rotation
- Fully proportional Hall effect joystick controls
- Hydraulic oil cooler
- Drive enable
- Horn
- Hour meter
- Tilt alarm
- Descent alarm
- Motion alarm
- 360° continuous turntable rotation
- Locking turntable covers
- Positive traction drive
- Two speed wheel motors
- Ground control box cover
- Engine status display
- Thumb rocker steer
- Dual flashing beacons

POWER

- 12 V DC auxiliary power
- Deutz turbo diesel 55 kW (74 hp)
- Anti-restart engine protection
- Auto engine fault shutdown

OPTIONS & ACCESSORIES

PRODUCTIVITY

- 7 kVA hydraulic generator (240 V/50 Hz)



Distributed by: